

zenon manual

Cross-reference list

v.7.00



© 2012 Ing. Punzenberger COPA-DATA GmbH

All rights reserved.

Distribution and/or reproduction of this document or parts thereof in any form are permitted solely with the written permission of the company COPA-DATA. The technical data contained herein has been provided solely for informational purposes and is not legally binding. Subject to change, technical or otherwise.

Contents

1. Welcome to COPA-DATA help	4
2. Cross-reference list	4
3. Cross reference list	5
3.1 General.....	5
3.2 The context menu	8
3.2.1 Search for list element	9
3.2.2 Function calls.....	9
3.2.3 Variable use	10
3.2.4 Unused variables / functions / fonts	10
3.2.5 Select list elements.....	11
3.2.6 Print list/search result	11
4. Project analysis.....	12
4.1 Result list.....	14

1. Welcome to COPA-DATA help

GENERAL HELP

If you miss any information in this help chapter or have any suggestions for additions, please feel free to contact us via e-mail: documentation@copadata.com (<mailto:documentation@copadata.com>).

PROJECT SUPPORT

If you have concrete questions relating to your project, please feel free to contact the support team via e-mail: support@copadata.com (<mailto:support@copadata.com>)

LICENSES AND MODULES

If you realize that you need additional licenses or modules, please feel free to contact the sales team via e-mail: sales@copadata.com (<mailto:sales@copadata.com>)

2. Cross-reference list

The cross-reference list gives an overview which modules and functions are linked how. zenon provides two instruments for this:

- ▶ Cross-reference list (on page 5): displays links in the project tabularly
- ▶ Project analysis (on page 12): analyzes the use of functions and variables and finds not used functions or variables

License information

Part of the standard license of the Editor and Runtime.

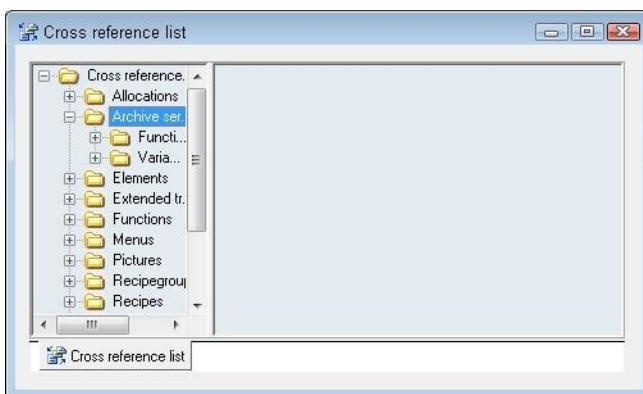
3. Cross reference list

The cross-reference list creates a tabular project overview.

All links between variables, functions, screens, recipes etc. are listed for documentation and traceability. E.g. in the Cross Reference List, one can see which variables are used in what screens.

3.1 General

In the zenon Editor the cross reference list can be opened in the menu **Options** with the entry **Cross-reference list**.



Info

*If the cross-reference list is not displayed in the Editor, you can open it with the command **Cross reference list** from the menu **Options**.*

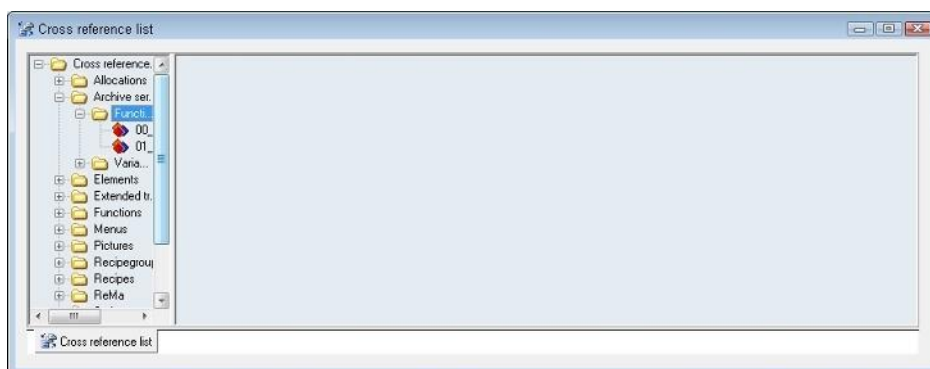
In order to get information about a certain module simply expand the corresponding topic.

The following topics are available:

Parameters	Description
Archive	Functions
	Variables
Screens	Elements
	Symbols
	Variables
Elements	Screens
	Variables
ETM	
Functions	Archive
	Autom. function call
	Screens
	Bitmap Button
	PFS
	REMA
	Scripts
	Text button
	Invisible Button
	Variable limits
	Time control
PFS	Functions
	Variables
REMA	Functions
	Variables
Recipes	Variables
Recipegroup Manager	Recipegroups
	Variables

Scripts	Functions
Symbols	Screens
	Linked symbols
Variables	Archive
	Screens
	Elements
	ETM
	Mathematics
	PFS
	REMA
	Recipes
	Recipegroup Manager
	Allocations
Time control	Functions
Allocations	Variables

After a click on one of the supported objects information about it is displayed in the list on the right part of the window.



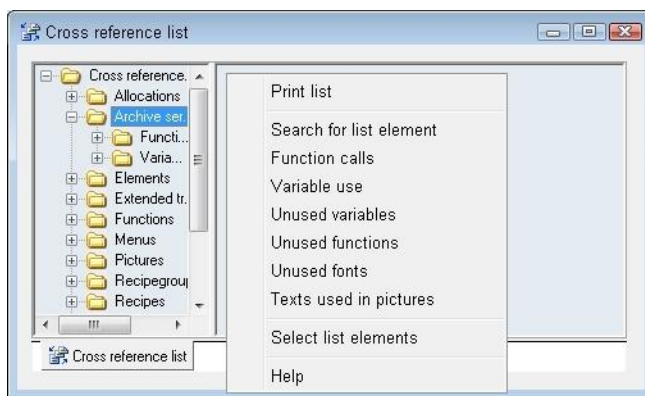
Information about the selected topic is displayed in the list area. The list can be sorted (ascending or descending) by clicking on the column header.

The list can also be filtered. Select the appropriate column and enter the filter criteria in the text-box below the column header (-> Enter text here). Now all elements corresponding the search criteria are

displayed. It is also possible to filter in different columns at the same time. Simply enter search criteria in different columns as explained above. If a filter is no longer needed delete the text in the filter box.

3.2 The context menu

In order to get access to the functionality of the Cross Reference List open a context menu by clicking into the list area.

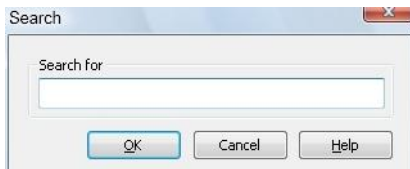


The following commands are available:

Parameters	Description
Print list/search result (on page 11)	Prints the list area of the Cross Reference List containing selected elements
Search for list element (on page 9)	Opens a dialogbox to search for a certain element
Function calls (on page 9)	Opens a dialogbox containing a list of the defined functions
Variable use (on page 10)	Opens a dialogbox containing a list of the defined variables
Unused variables / functions / fonts (on page 10)	Displays all unused variables/functions/fonts in the list area
Used texts in screens	Searches for texts used in screens
Select list elements (on page 11)	Opens a dialogbox for the selection of one or more listed elements
Help	Opens Online-Help
Delete	Deletes unused elements (variables, functions and fonts)

3.2.1 Search for list element

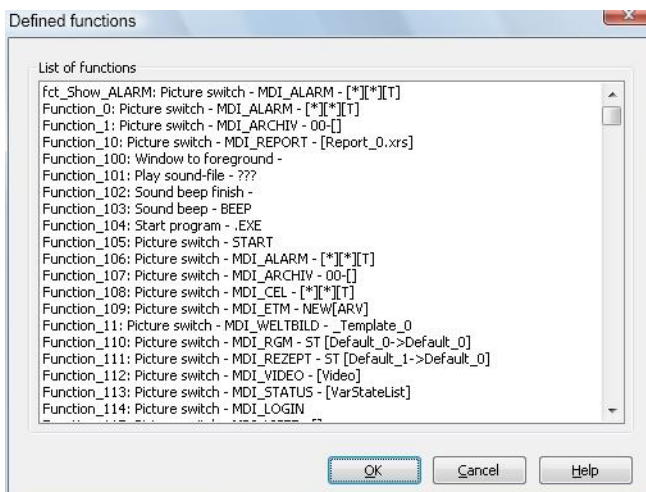
The selection of the command **Search for list element** from the context menu opens the following dialogbox:



After giving one or more initial letters the first corresponding object in the list is selected.

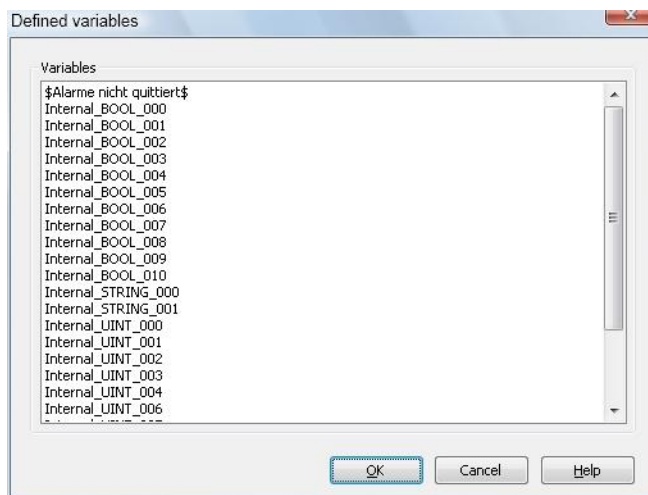
3.2.2 Function calls

Selecting the command **Function calls** from the context menu opens the following dialogbox, in which all defined functions of the current project are listed:



3.2.3 Variable use

The selection of the command **Function calls** from the context menu opens the following dialog box, in which all defined functions of the current project are listed:



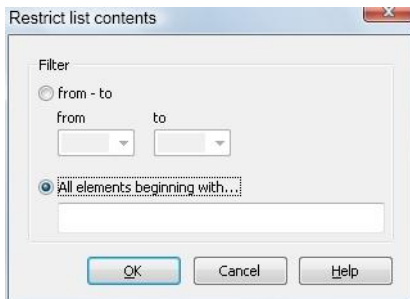
3.2.4 Unused variables / functions / fonts

In the list of unused elements (variables, functions and fonts) the context menu gets an additional menu entry "delete".

So elements can be selected in the list and be directly deleted there.

3.2.5 Select list elements

The selection of the command `Select list elements` from the context menu opens the following dialogbox:



The following options are available:

Parameters	Description
from - to	Selection of the elements from a stated initial letter to another stated initial letter.
All elements beginning with ...	Selection of the elements by stating an initial letter or string.

3.2.6 Print list/search result

The selection of the command `Print list` or `Print search result` from the context menu opens the following dialogbox:

The following options are available:

Parameters	Description
All	All elements of the list are printed
Marked elements	All selected elements of the list are printed
to file	By activating this control box the output is rerouted to a file. A dialogbox opens asking for the path and the name of the file. Confirming with "OK" saved the file. This file has the CSV format and can be loaded in EXCEL and be formatted as desired. Loading this file in EXCEL opens a dialogbox asking for a

	separator. Activate the control box “Semicolon” and deactivate all others.
--	--

4. Project analysis

The project analysis analyzes the use of elements in a project.

At this:

- ▶ the link with other elements can be analyzed
- ▶ you can search for unused elements

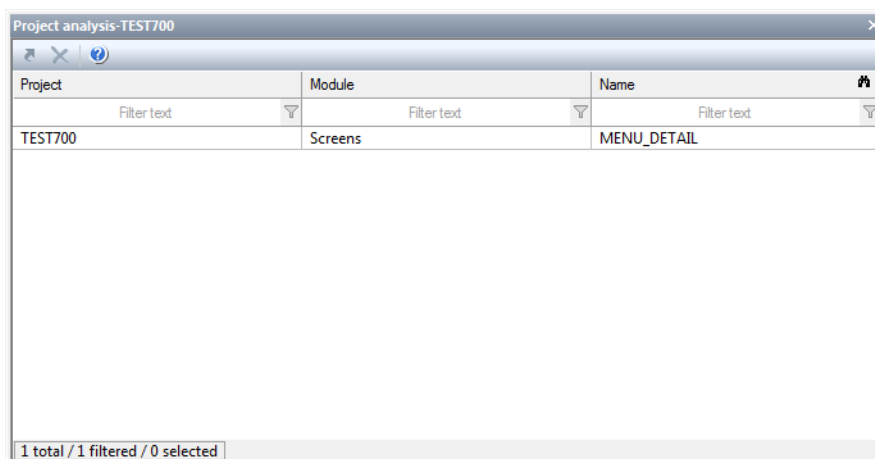
Currently the project analysis is available for:

- ▶ Functions
- ▶ Variables

ANALYZE THE USE OF AN ELEMENT

To analyze an element:

1. highlight the desired variable or function in the detail view
2. in the context menu select menu item **Variable use** Or **Function use**
3. the result list (on page 14) is displayed in an own window



Project	Module	Name
TEST700	Screens	MENU_DETAIL

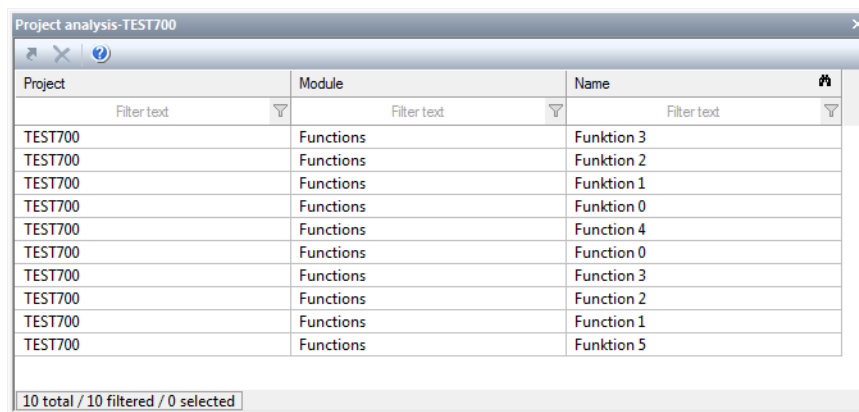
1 total / 1 filtered / 0 selected

- via the context menu you can jump to an element

FIND NOT USED ELEMENTS

To find the not used elements:

- highlight the node variable or function in the project tree
- in the context menu select menu item **Display not used functions** Or **Display not used variables**
- the result list (on page 14) is displayed in an own window



Project	Module	Name
Filter text	Filter text	Filter text
TEST700	Functions	Funktion 3
TEST700	Functions	Funktion 2
TEST700	Functions	Funktion 1
TEST700	Functions	Funktion 0
TEST700	Functions	Function 4
TEST700	Functions	Function 0
TEST700	Functions	Function 3
TEST700	Functions	Function 2
TEST700	Functions	Function 1
TEST700	Functions	Funktion 5

10 total / 10 filtered / 0 selected

- via the context menu you can jump to an element or delete it

Attention

The following elements cannot be found by the project analysis:

- ▶ Variables which are only used in VBA or VSTA
- ▶ Variables which are used in screens of type Report Generator (report function)

Before you delete elements you must check whether variables which should be deleted are used in VBA/VSTA or in report functions.

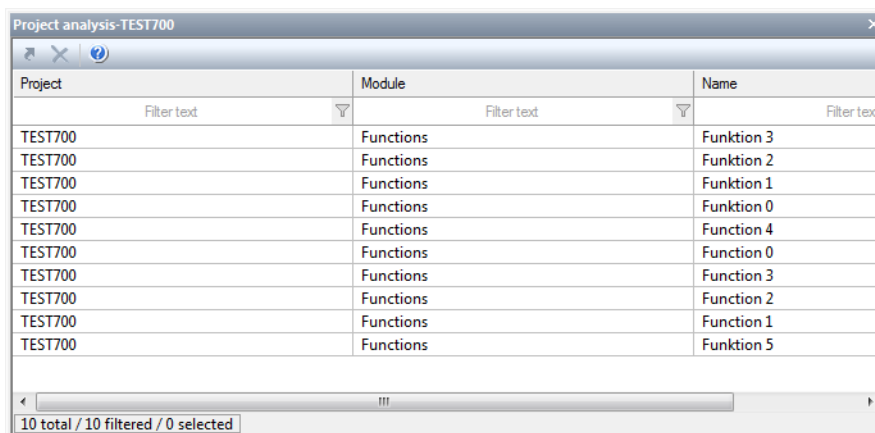
4.1 Result list

The results of the single analysis processes are displayed in a list in an own window in the **project analysis**. This window opens - if it is not active yet - automatically after the analysis process. The results can be used in two ways:

- ▶ Analyze use in the project: jump to linked element
- ▶ find not used elements: jump to displayed element or delete displayed element

ANALYSIS ELEMENT USE

The project analysis displays its result in a list.



Project	Module	Name
Filter text	Filter text	Filter text
TEST700	Functions	Funktion 3
TEST700	Functions	Funktion 2
TEST700	Functions	Funktion 1
TEST700	Functions	Funktion 0
TEST700	Functions	Function 4
TEST700	Functions	Function 0
TEST700	Functions	Function 3
TEST700	Functions	Function 2
TEST700	Functions	Function 1
TEST700	Functions	Funktion 5

10 total / 10 filtered / 0 selected

It contains:

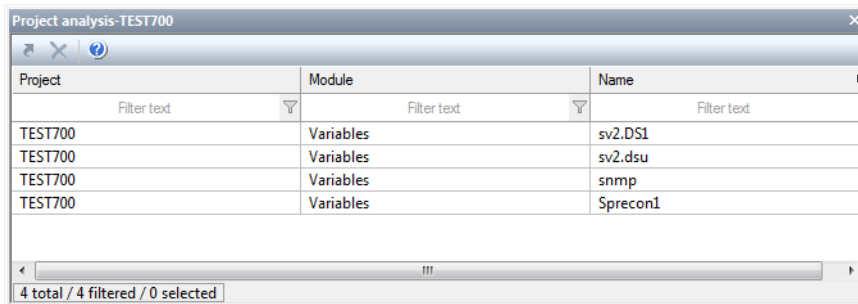
- ▶ The project name
- ▶ the module
- ▶ the name of the linked elements

To jump to a displayed element:

1. highlight the element
2. select menu item **Jump to linked element** from the context menu
3. the linked element is highlighted in the detail view of its module node

FIND UNUSED ELEMENTS

The search for unused elements returns its results in a list.



Project	Module	Name
TEST700	Variables	sv2.DS1
TEST700	Variables	sv2.dsu
TEST700	Variables	snmp
TEST700	Variables	Sprecon1

It contains:

- ▶ The project name
- ▶ the module
- ▶ the name of the unused elements

JUMP TO ELEMENT

To jump to a displayed element:

1. highlight the element
2. select menu item **Jump to linked element** from the context menu
3. the linked element is highlighted in the detail view of its module node

DELETE ELEMENTS

To delete one or more elements:

1. highlight the desired elements (multiple selection is possible)
2. in the context menu select the command **Delete selected elements**
3. the elements are deleted from the project after a confirmation message